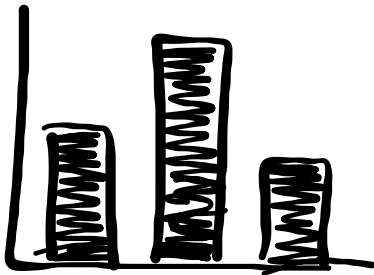
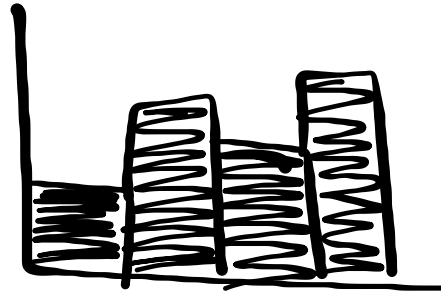


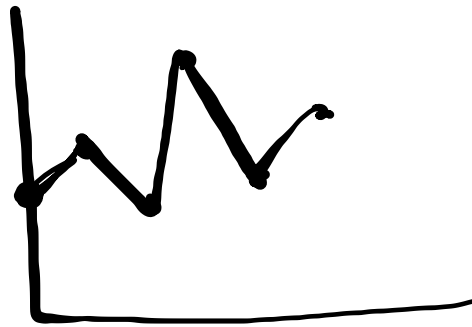
REPRESENTING DATA



Bar Graph



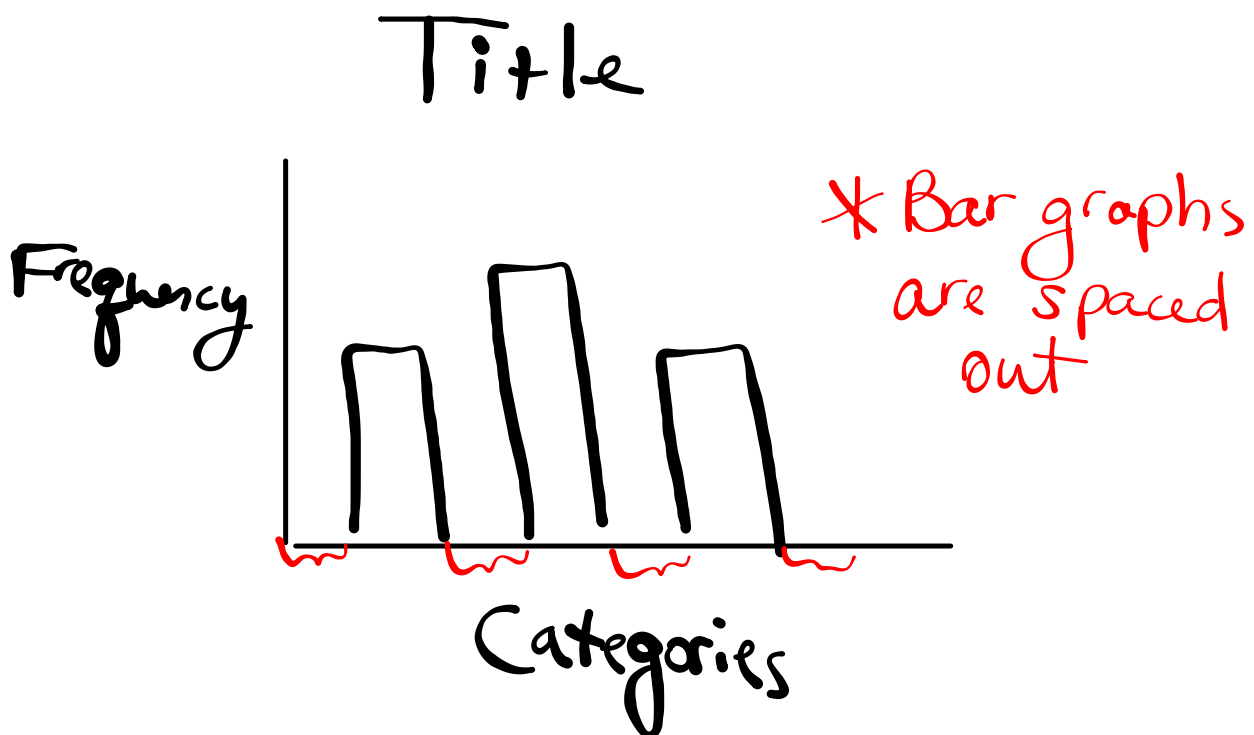
Histogram



Line Graph

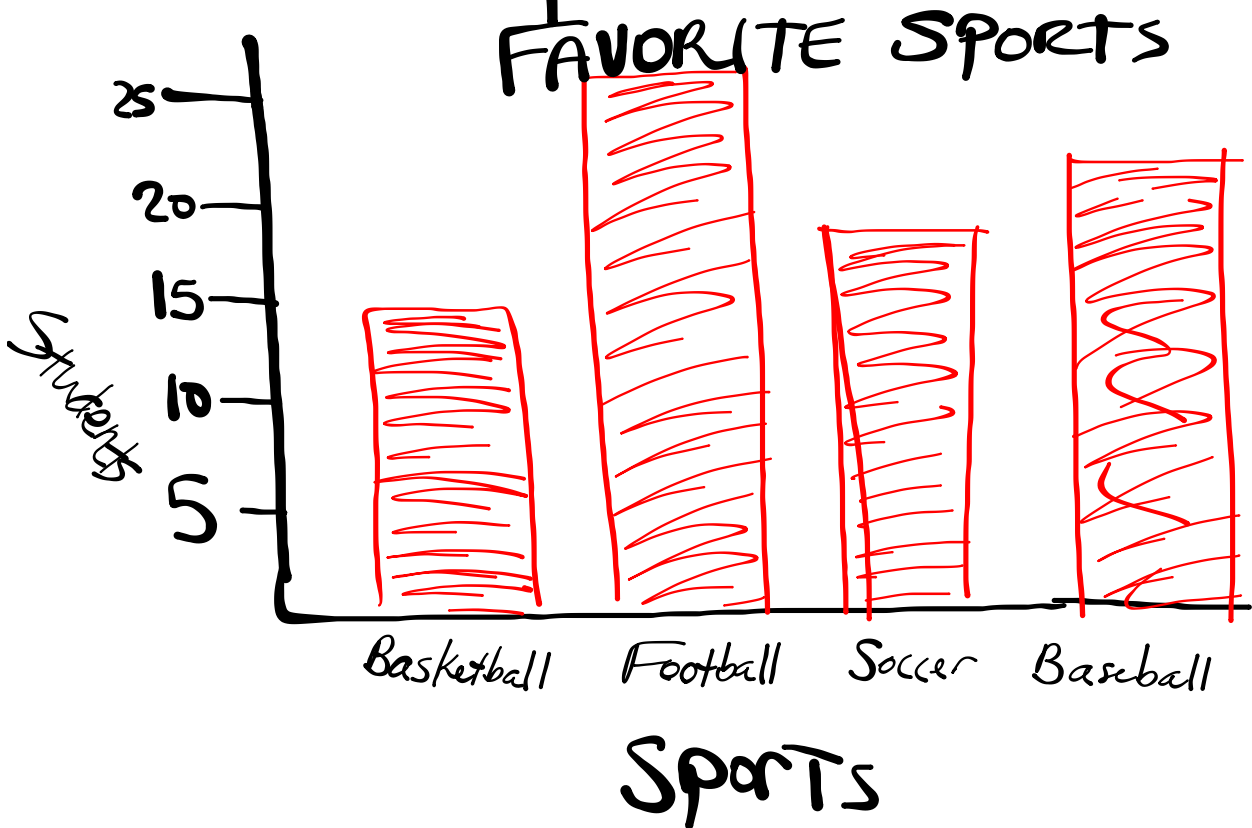
BAR GRAPH

- Graph that represents frequencies in categories.



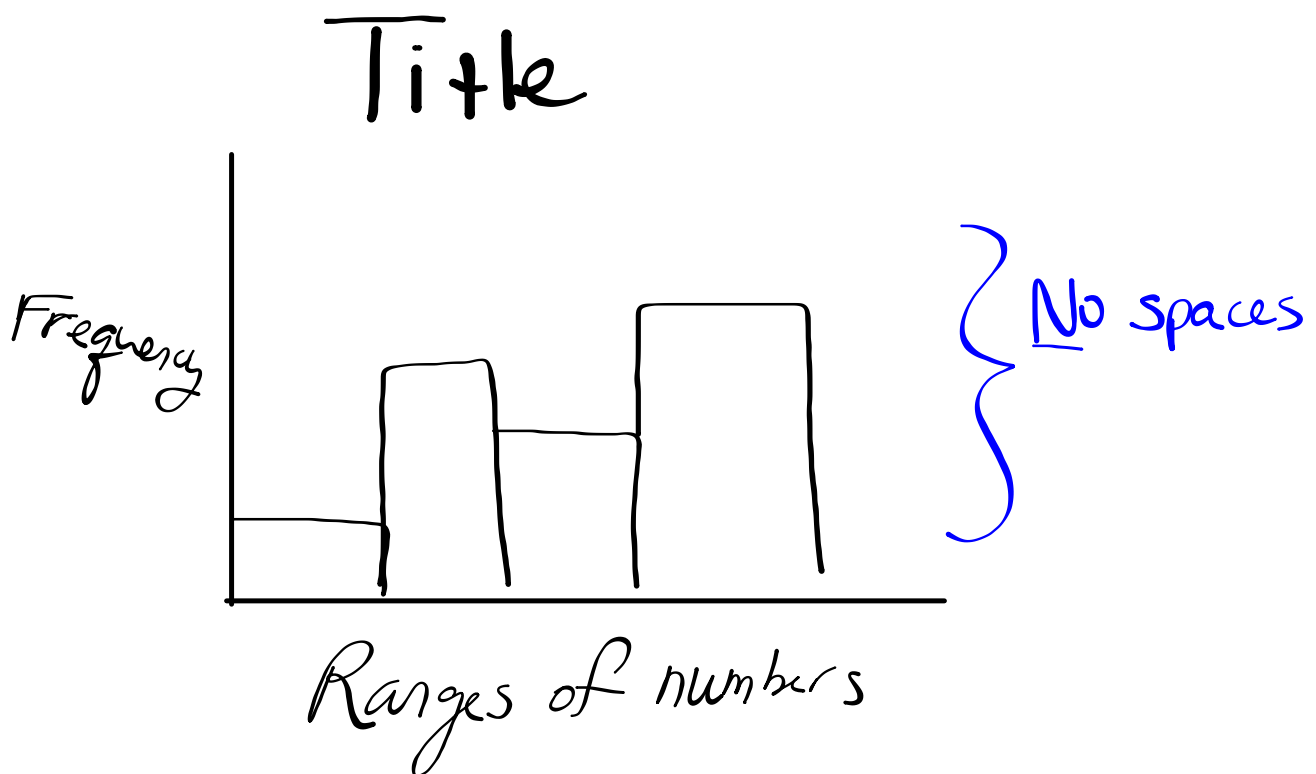
Example:

Favorite Sport	
basketball	15
football	25
Soccer	18
baseball	21



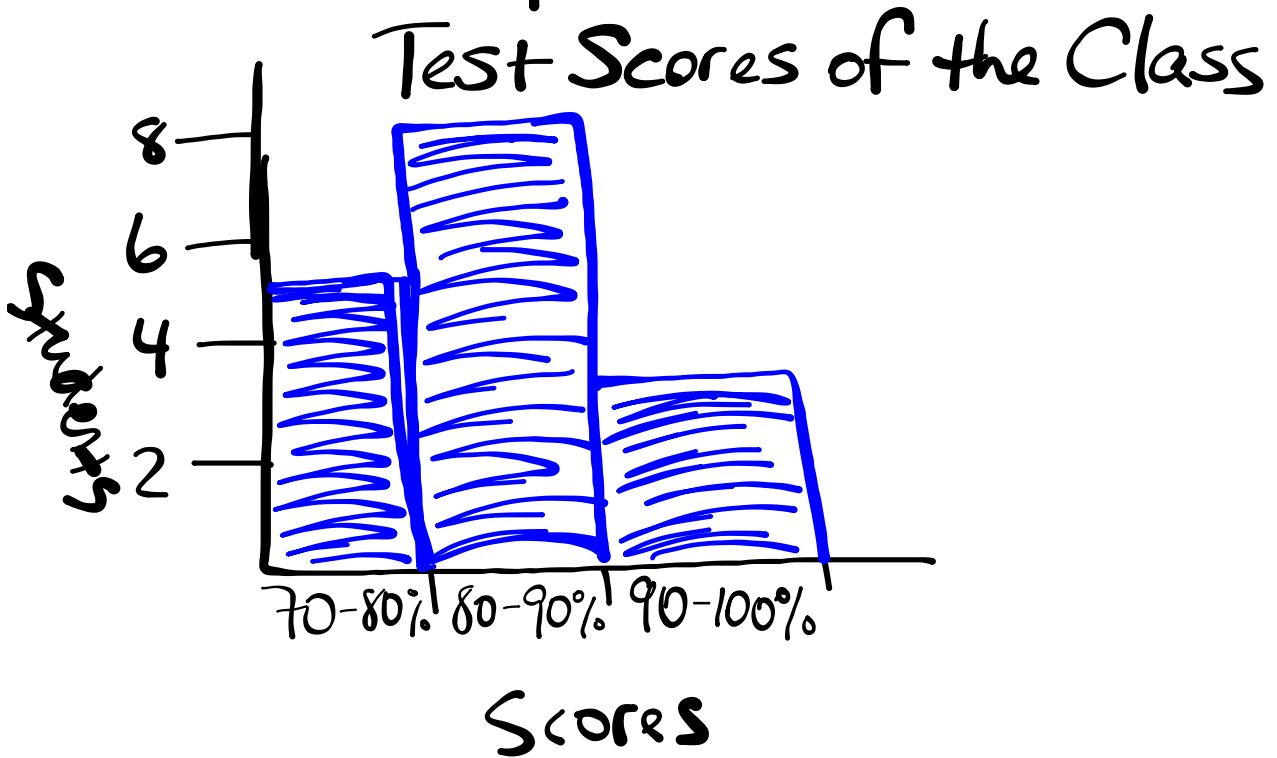
HISTOGRAM

• A type of bar graph used to display ranges of numbers



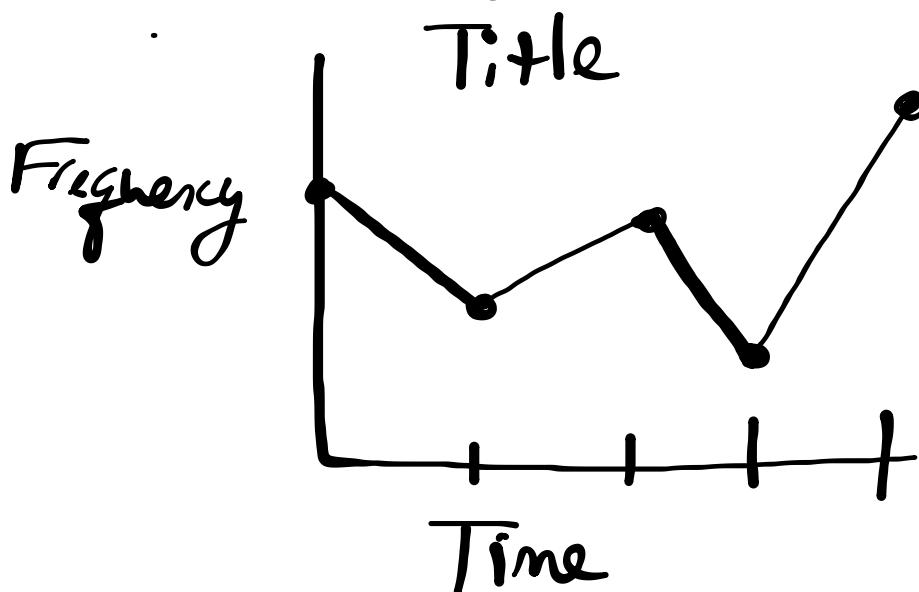
Example:

Test Scores	
70-80%	5
80-90%	8
90-100%	3



LINE GRAPH

- Shows how data changes over time.
- Used if we wanted to focus on the change between data.



Example

Sept	\$670
Oct	\$229
Nov	\$300
Dec	\$168

